

Jameco Part number 106462  
O/N: 106462, 106489, 106471, 106497

EVAL - 2-8-94

#1662, 1663, 1664

## REED RELAY

### EDR SERIES



EMR SERIES



DIP SWITCH SERIES

**ECE®**

**EXCEL CELL ELECTRONIC CO., LTD.**  
NO.20, 25RD, TAICHUNG INDUSTRIAL PARK, TAICHUNG,  
TAIWAN, R.O.C.  
TEL: (04) 3591253 (REP.) CABLE: "EXCELL" TAICHUNG  
TELEX: 57137 EXCELL FAX: 886-4-3593893-359466  
TAIPEI OFFICE: 6F-9, NO.1, WU-CHUAN 1 ROAD HSI  
CHUNG CITY, TAIPEI HSIEN TAIWAN, R.O.C.  
TEL: 886-2-2996268 (REP.) FAX: 886-2-2994792

台智電子股份有限公司 台中市工業區工業路20號

Jameco Part number 106462

## 1. FEATURES:

- 1.1: Miniature, cost-effective switching solution.
- 1.2: State-of-the art capsule designs.
- 1-3: Molded construction for compatibility with automatic board processing
- 1-4: Epoxy -molded dual-in-line-package.
- 1-5: Completely washable.

## 2. SPECIFICATIONS

### 2-1 Coil Rating:

Nominal Voltage(v)	Max Operate Voltage(v)	Pull-In Voltage(v)	*Coil Resistance( $\Omega$ )	Dissipation (mW)
DC5	21	3.75	500 $\pm$ 10%	50
DC12	30	9.00	1000 $\pm$ 10%	144
DC24	44	18.00	2150 $\pm$ 10%	268

Special design are available on request

### 2-2 Contact Rating:

Switching Current	0.5 Adc Max
Carry Current	1.0 Adc Max
Switching Power	10 VA Max
Electrical Life	100x10 <sup>4</sup> r4%r (Ref 10VDC, 10mA)
Contact Resistance	200m $\Omega$ Max
Contact Form	1 Form A
Operate Time	1.0ms Max Including Bounce Time
Release Time	1.0ms Max Including Bounce Time
Max Voltage	100VDC or Peak AC
Insulation Resistance	10 <sup>10</sup> Ohms

### 2-3 Dielection strength:

- 1400 VDC Between Coil And Contact
- 250 VDC Between Contacts

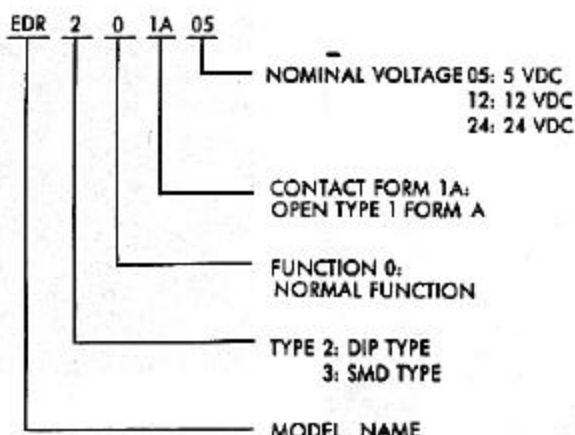
### 2-4 Temperature Range:

- Operating Temp: -40°C - +85°C
- Storage Temp: -55°C - +125°C

### 2-5 Shock Resistance:

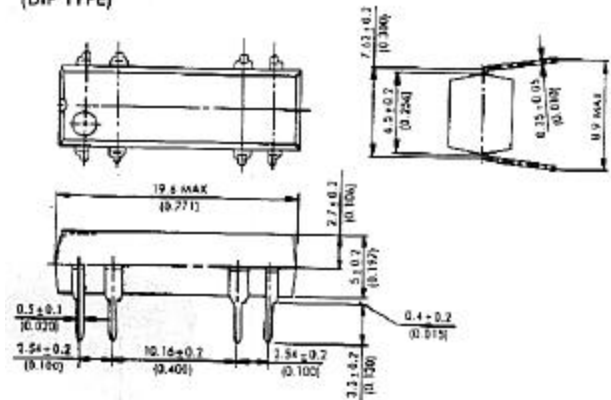
- 30g Min.

## 3. PART NUMBERING SYSTEM

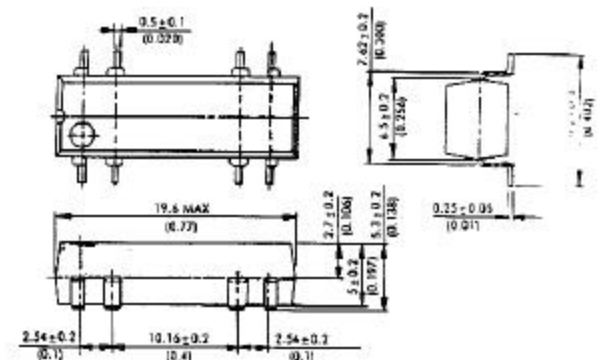


## 4. DIMENSIONS Unit: mm (inch)

### (DIP TYPE)

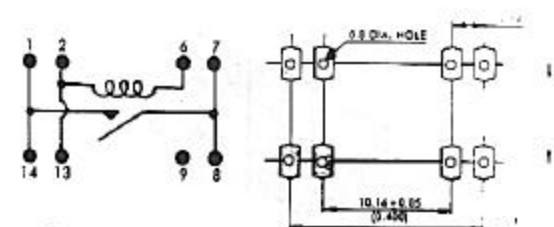


### (SMD-SO TYPE)

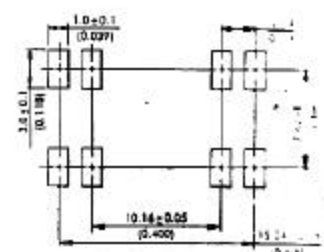


### 1 Form A

### (DIP)



### (SMD-SO)



Jameco Part number 106462